



Total Geospatial Solutions

Corporate Headquarters
1935 Jamboree Drive, Suite 100
Colorado Springs, CO 80920
1.866.SANBORN
www.sanborn.com



SOUTHERN GROUP OF STATE FORESTERS

Southern Fire Risk Assessment System

What's New in SFRAS v 9.2.2

September 2008

The Sanborn Map Company, Inc.–All Rights Reserved Confidential. This documentation is provided as a final deliverable along with a license of the Southern Fire Risk Assessment System (SFRAS). This documentation may be disclosed and distributed solely for the purposes of using this documentation to operate the SFRAS software. Distribution to third parties, outside contractors, or those not involved in the Southern Wildfire Risk Assessment project is strictly prohibited.

©2008, The Sanborn Map Company, Inc., ALL RIGHTS RESERVED.

D R A F T

More Information?

For more information about the SWRA project contact:

Tom Spencer

Southern Wildfire Risk Assessment (SWRA) Project Manager

Email: tspencer@tfs.tamu.edu

Web site for the SWRA project – <http://www.southernwildfirerisk.com>

Web site for Southern Group of State Foresters -

<http://www.southernforests.org>

For more information about the SFRAS software contact:

Sanborn Map Company

Email: SFRAS-support@sanborn.com

Table of Contents

WHAT'S NEW WITH SFRAS 9.2.2?	4
FILE ORGANIZATION	4
PREFERENCES – LOAD MODEL OUTPUTS	5
PREFERENCES – CHANGE FUEL TREATMENT START YEAR	5
CREATE LEVEL OF CONCERN – SAVE CUSTOM SCORES	6
CREATE – AUTOMATED REPORTS	6
<i>AOI Reports</i>	<i>7</i>
<i>Published Results Reports</i>	<i>7</i>
BUG FIXES	8
<i>Areas of Concern</i>	<i>8</i>
<i>User Permissions</i>	<i>8</i>

What's New with SFRAS 9.2.2?

This document describes the new features available in the latest version of SFRAS, v9.2.2 released in September 2008. It is intended to get users up to speed quickly on the enhanced capabilities in this release.

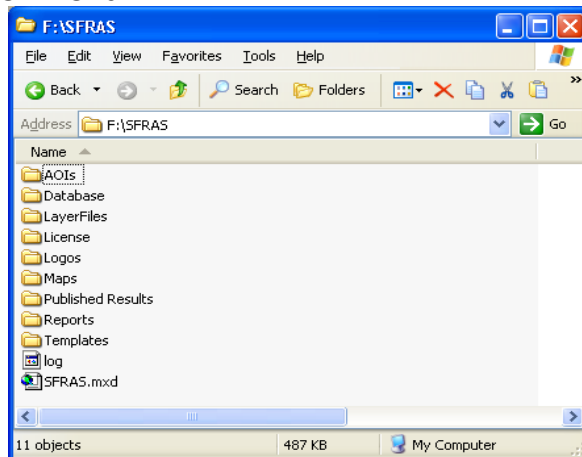
There have been several enhancements and a couple bug fixes to SFRAS v9.2.2. Many of these are subtle and reflect greater flexibility when using the tools. This increases the user experience and enhances performance when working with the SWRA datasets. These enhancements include:

- Enhancing the open AOI tool to load any 'model outputs' layers (Preferences)
- Allowing users to set their Fuel Treatment 'start' year – tool no longer tied to system clock (Preferences)
- Allowing users to save custom scores defined in the LOC tool (so they can be retrieved for future use)
- Adding the Automated Report Tool that allows users to easily create summary reports.
- Fixing Areas of Concern bug and a user permissions bug

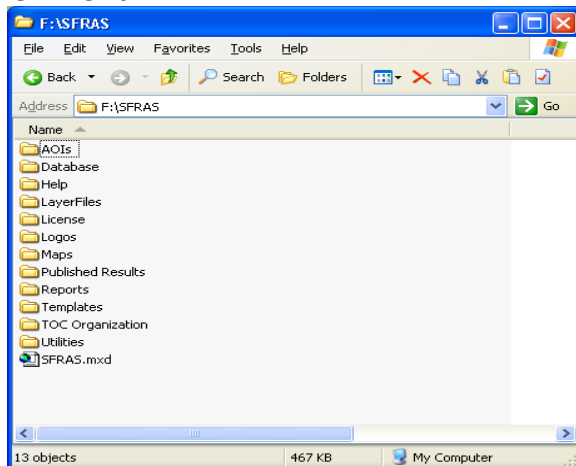
File Organization

For those of you who like to check *under the hood*, you'll see that we've continued to make some minor adjustments to the file organization structure. The new folder structure adds more flexibility to SFRAS by moving key files into their own folders for easier reference. Also, the AOIs are now stored in a separate geodatabase within the AOIs folder. This simple change will make upgrading and keeping your AOIs much easier. The following figure illustrates the different file folders in SFRAS v9.2 and v9.2.2.

SFRAS v9.2



SFRAS v9.2.2



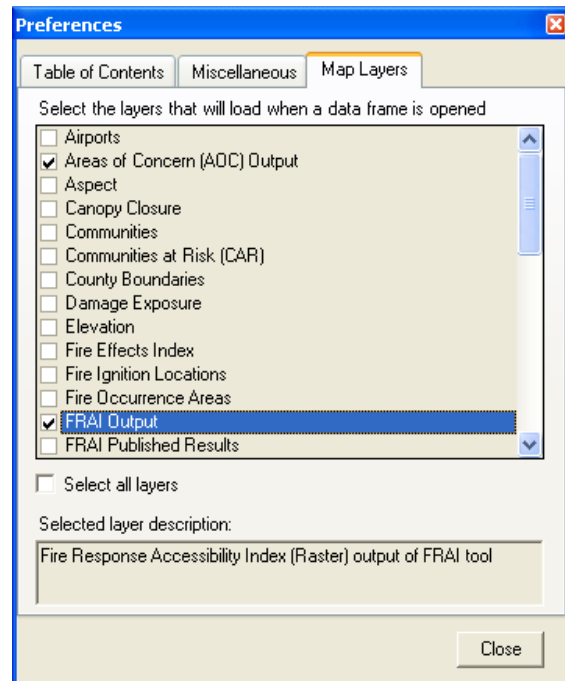
Preferences – Load Model Outputs

With the release of SFRAS 9.2, we introduced Map Layer preferences. In the 9.2.2 release, we've added a few layers to this list to accommodate previously run model outputs.

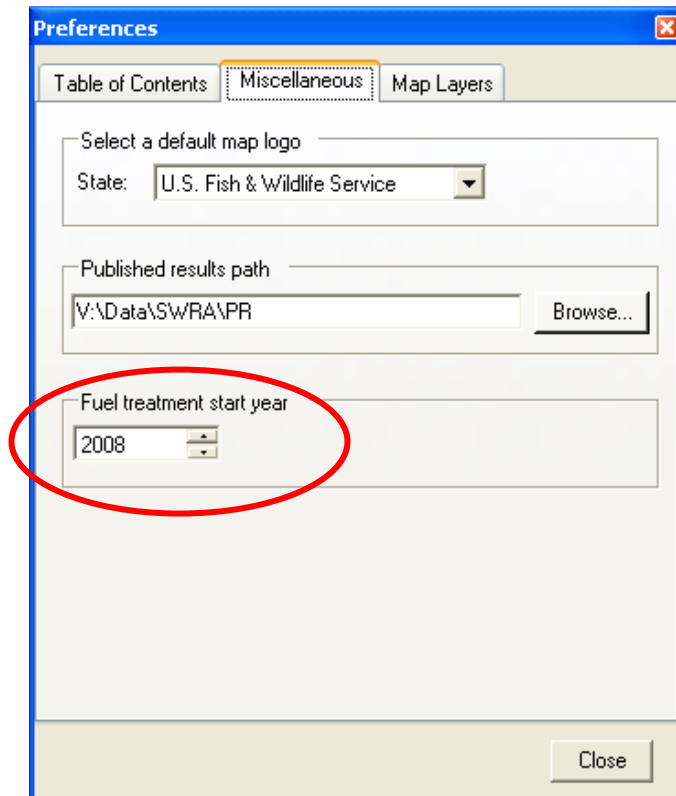
On your SFRAS toolbar, select **Tools > Preferences** and select the **Map Layers** tab. Here you will find additional options for:

- Areas of Concern Output,
- FRAI Output,
- Level of Concern Output,
- Surface Fuels Output and
- WFSI Output.

When these layers are checked in the Map Layers preferences, they will be automatically loaded into the data frame when an AOI is opened or imported.



Preferences – Change Fuel Treatment Start Year



Another addition to the Preferences tool is the ability to set the fuel treatment start year. In previous versions of SFRAS, the start year used in the fuel treatment tool was tied to the system clock of your computer.

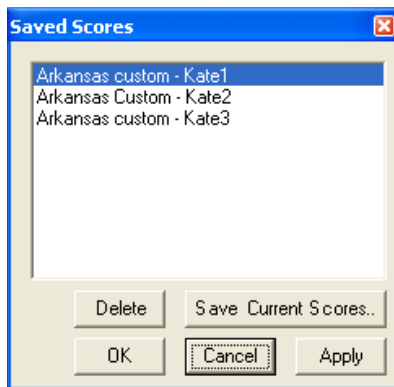
Go to **Tools > Preferences** and select the **Miscellaneous** tab. Below the Published results path preference is a box to set the fuel treatment start year. The default setting is the current year as defined by your system clock, but you can change this by using the scroll buttons.

Create Level of Concern – Save Custom Scores

Previous versions of SFRAS allowed you to create custom scores for your Level of Concern model runs, but did not allow you to store them. Now, custom scores can be saved with unique names so you can reuse them in the future.

With your AOI as the active data frame, go to **Create > Indices > Level of Concern**. When the Level of Concern score box opens, you will notice a couple of new buttons on the bottom of the dialog.

Saved Scores... will open a new control box that will manage your saved scores.



Use this box to save, delete, or apply current scores.

If you decide later that you want to use the default scores for your state, simply click the **Reset Defaults** button on the LOC dialog.

Layer Name	Score	Default
<input checked="" type="checkbox"/> Plantations	31	31
<input checked="" type="checkbox"/> Transportation/Infrastructure Area Roads Buffer Distance (feet) 984 Other Buffer Distance (feet) 1640	28	28
<input checked="" type="checkbox"/> Wildland Urban Interface	37	37

Layer Name	Score	Default
Base Suppression Score:	35	35
Fuel Types: Fuels		
- Grass Score	23	23
- Shrub Score	31	31
- Timber Litter Score	34	34
- Slash Score	35	35
<input checked="" type="checkbox"/> Organic / Peat Soils	60	60
Layer Name	Multiplier	Default
Topography (slope)		
- Class 1 (0 - 25%)	1.00	1.00
- Class 2 (26 - 40%)	2.00	2.00
- Class 3 (41 - 55%)	3.00	3.00
- Class 4 (56 - 75%)	4.00	4.00
- Class 5 (76+ %)	4.00	4.00

WFSI: WFSI

Saved Scores... Reset Defaults Create Cancel

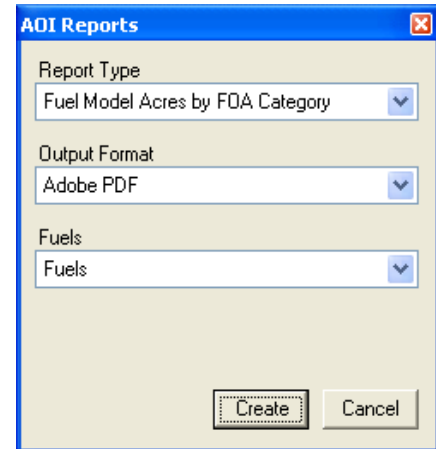
Create – Automated Reports

The Reports tool has been enhanced with this version to become a much more robust capability. The new SFRAS reporting tools will generate summary reports of Published Results and AOI data. These tools are located under **Create > AOI Reports** and **Create > Published Results Reports**. Each tool is slightly different, so let's start with the **AOI Reports tool**.

AOI Reports

To use the AOI Reports tool, ensure an AOI is the active data frame and select **Create > AOI Reports** from the SFRAS toolbar. Simply select the report type, output format, and layer version(s) for the report. There are ten report types available for AOIs.

AOI Report Types
Fuel Model acres by FOA category
Fuel Model acres by WFSI category
Fuel Model acres by FEI category
Fuel Model acres by LOC category
FOA acres by WFSI category
FOA acres by FEI category
FOA acres by LOC category
WFSI acres by LOC category
FEI acres by LOC category
LOC acres by FRAI category

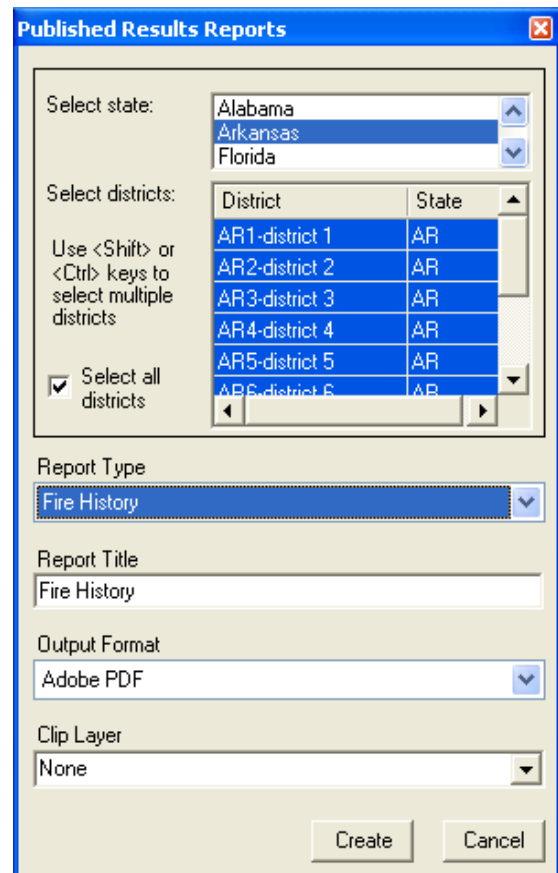


Published Results Reports

Unlike AOI reports, a data frame does not need to be active to create summary reports for Published Results, unless you want to use a clip layer. From the SFRAS toolbar, select **Create > Published Results Reports**.

The Published Results Reports dialog appears. Select your state and district(s). Select the Report Type, enter a Report Title, and select Output Format.

An additional option allows you to use a Clip Layer. This clip layer can be any polygon data layer that is available in the map. If no clip layer is selected, the report will include all data in the districts selected. If a clip layer is chosen, the data selected for Report Type will be clipped by the selected clip layer and the resulting report will only include data within the clip layer for the selected districts.



Published Results Reports Types	
Fire History	<p>To be used as a clip layer, the desired polygon layer needs to be loaded in ArcMap. Ensure that your clip layer is in the same projection as the SFRAS Published Results data and within your selected districts.</p> <p>When satisfied with your selections, click Create. After some processing, a Save dialog will appear. Select a place to save your report, click Save, and your report will open automatically. The Published Results Reports list State, Date of report, Districts, and clip layer (if any).</p>
Fire Occurrence Areas	
Surface Fuel Models	
Wildland Fire Susceptibility Index	
Level of Concern	
Communities at Risk	

Bug Fixes

Areas of Concern

A logic bug was discovered in the Areas of Concern (AOC) process that resulted in uncalculated concern ratings for polygons on the edges of an AOI. This bug has been fixed.

User Permissions

Windows security updates have tightened security on windows registry values, thus suddenly making it impossible for non-administrator users to use SFRAS for some functions. This bug will only occur to those users who have the Windows Update feature turned on with their computer. In response to these Windows changes, we have made some permissions changes to the installation program to solve this. You must have administrator privileges to install or uninstall SFRAS, but you only need basic user permissions to run it. We will continue to monitor the Windows Updates for similar changes in the future. Let us know if you experience any similar problems.